

# µVision2 with Hitex Emulators

## The Full Integration

It's nearly just a love story between embedded software tools. At Hitex, we keep the developer in mind and that's why we won't let a good decent in-circuit emulator like the DProbe167, the MX51 or the Ax51 go with any tool. We'll only integrate our products with the best from the embedded world in order to maximize developer benefit.

µVision2 from Keil Software is a powerful IDE. It provides a whole load of functionality for project management,

source code editing and program debugging in one package.

Features such as:

- > Source browser
  - > Tools menu and integration with PC-Lint
  - > EasyCASE and
  - > DAVe
- will help you make it to the finish line first.

And now there's more! Being able to access the full feature-set of the Hitex

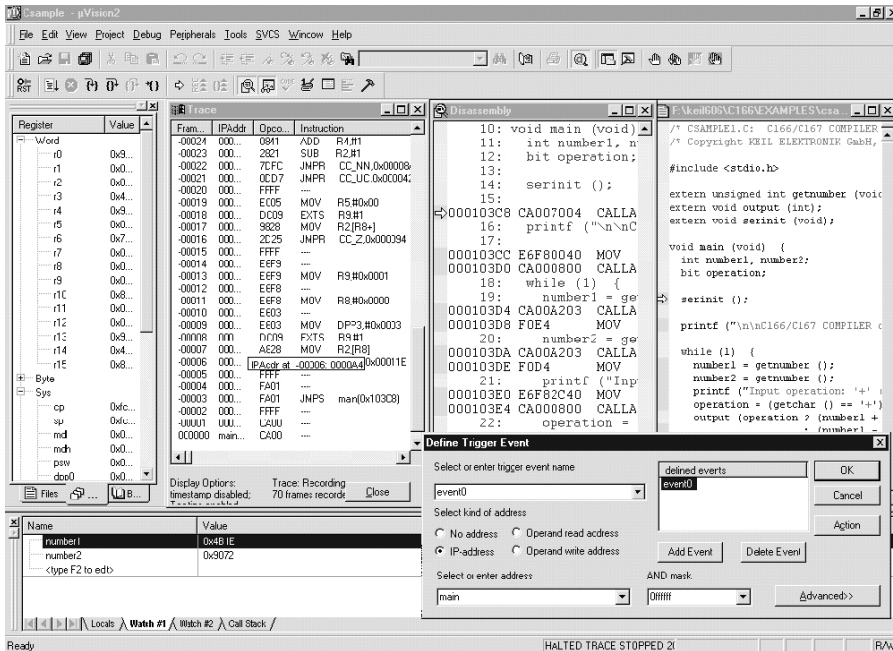
emulator from this environment will give you the power to test drive your software and hardware in real-time – so you can detect and kill any bugs long before customers ever use your product.

Currently supported emulators are:

- > AX51
- > MX51
- > DProbe167

For more detailed informations please visit our web site [www.hitex.com](http://www.hitex.com) or [www.hitex.de](http://www.hitex.de)

### µVision2 User Interface



## Highlights

- Same user interface as simulator!
- Full integration of emulator functionality, including
  - Hardware breakpoints
  - Triggers
  - Sequencer logic
  - Data trace display (AX/MX51)
  - Qualified trace recording
  - Memory mapping
  - On-the-fly memory access
  - Real-time debugging

### Hitex Development Tools

[www.hitex.com](http://www.hitex.com)

Embedding Software Quality

#### Main Office Germany

Greschbachstraße 12 Tel. +49-721-9628-0  
D-76229 Karlsruhe Fax +49-721-9628-149  
E-mail [sales@hitex.de](mailto:sales@hitex.de)

#### Hitex USA

710 Lakeway Drive, Tel. 1-800-45-HITEX  
Suite 280, Tel. +1-408-7337080  
Sunnyvale, CA 94085 Fax +1-408-7336320  
E-mail [info@hitex.com](mailto:info@hitex.com)

#### Hitex Asia

25, International Tel. +65-566-7919  
Business Park, #04-62A Fax +65-563-7539  
German Centre E-mail  
Singapore 609916 [sales@hitexasia.com.sg](mailto:sales@hitexasia.com.sg)

#### Munich Office Germany

Oskar-von-Miller-Str.1a Tel. +49-8165-6175-0  
D-85386 Eching Fax +49-8165-6175-449

#### Hitex UK

Warwick University  
Science Park Tel. +44-24-76692066  
Sir William Lyons Road Fax +44-24-76692131  
GB-Coventry CV47EZ E-mail [Sales@hitex.co.uk](mailto:Sales@hitex.co.uk)

This brochure is intended to give overview information only. Since our policy is one of continuing development, changes and technical enhancements are possible. Trademarks of other companies used in the text refer exclusively to the products of these companies. Hitex, HITOP and RIAS are registered trademarks of Hitex.

Our Partner:

See our web sites for current distributor list!