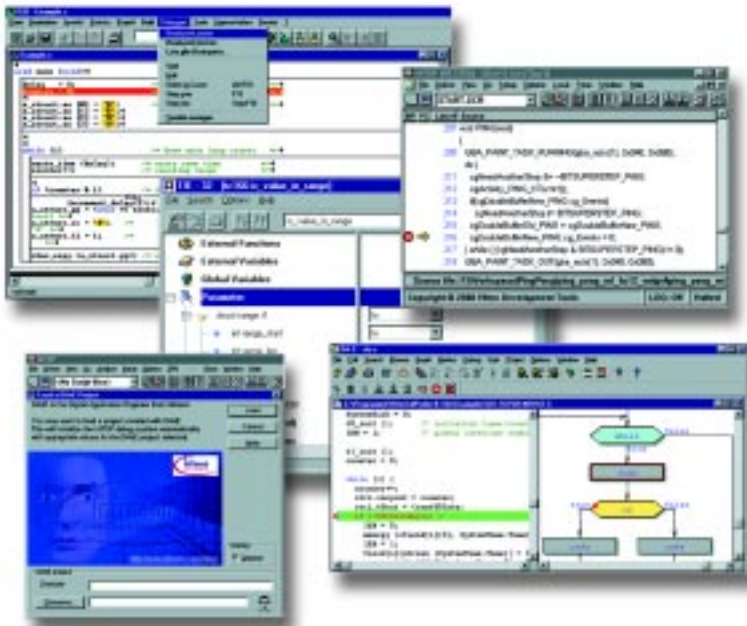


hitex

DEVELOPMENT TOOLS



Tools that link into **HiTOP**

Embedding Software Quality



HiTOP



Powerful Software Tools for the Embedded World

HiTOP is the Windows based universal user interface for nearly all Hitex development tools. It provides state-of-the art HLL debugging and easy access to all in-circuit emulator resources such as Trace, Trigger, Sequencer, Performance Analysis, Coverage, Memory mapping and Setup of the target system.

With its Remote Control Interface (RCI), HiTOP offers a powerful interface to partner tools giving the partner tool almost complete control of the development tool. The interface allows the partner tool not only to use basic debugging features like breakpoint setting, but also to retrieve information from the development system, like Trace data or memory contents. Various partner tools make use of this interface to extend their functionality, like a test program that executes the functions under test in real-time on an in-circuit emulator.

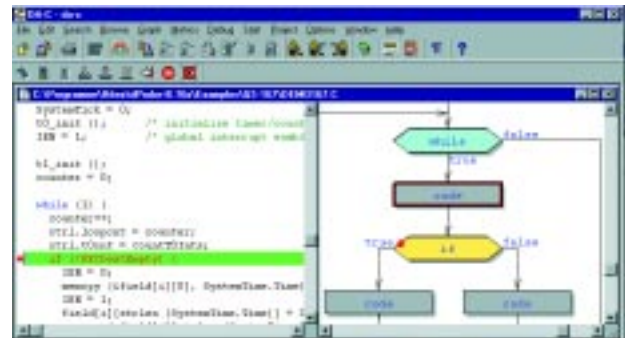
The RCI specification is available from Hitex. Every tool may operate HiTOP via RCI.



DA-C – Development Assistant For C

DA-C from RistanCASE is used to develop, review, document and maintain C projects. DA-C allows you to browse through your project files and edit them. DA-C displays your C program in structogram (Nassi-Shneiderman) form or in flow chart form. DA-C features include Software Metrics, which allow you to rate the quality of your software. The Static Code Analysis feature points out possible errors that a compiler may not be able to find. DA-C lets you easily navigate in your code to find definitions and declarations of variables, caller/callee-pairs etc. It supports more than 90 dialects of C compilers for embedded applications.

RistanCASE, a Swiss company, was founded in 1994 and concentrates on the Development Assistant product line.



EasyCODE

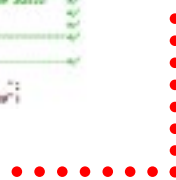
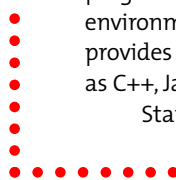
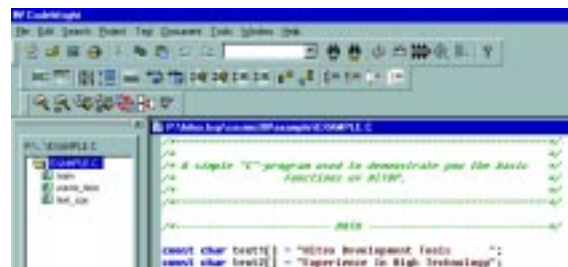
EasyCODE / EasyCASE from BKR is an editor for Nassi-Shneiderman diagrams that also includes features for reverse engineering, documentation, program maintenance, code reviews, etc.

BKR, a German company based in Nuremberg, was founded in 1990. The company is carrying out further development of EasyCODE, which it acquired from Siemens Austria in 1999.









CodeWright

CodeWright, the programmer's editing system from StarBase (formerly Premia) provides a toolkit to ease programmer's chores. The integrated development environment allows for high productivity. CodeWright provides good support for programming languages such as C++, Java, VB, HTML, XML, and others.

StarBase is located in California, USA.



Tools that link into HiTOP

Product	Available from Hitex		Functionality	Required	Partner/Web-Site
	national	international			
DA-C			Set/delete breakpoints Control the application (start, stop, step)	HiTOP V4.10 or later and DA-C V3.5.568 or later	www.ristancase.ch
EasyCode		–	Set/delete breakpoints Control the application (start, stop, step)	The software for the link is available from Hitex	www.bkr.de
CodeWright		–	Set/delete breakpoints Control the application (start, stop, step) View contents of variables	The software for the link is available from Hitex	www.starbase.com
X32	–	–	Set/delete breakpoints Control the application (start, stop, step) View contents of variables	The software for the link is available from Hitex	www.blue-river-software.com
Tessy			Program test using HiTOP	Tessy V1.3.3, HiTOP V4.10	www.razorcat.com
Rhapsody in MicroC	–	–	Graphical back animation	The software for the link is available from Hitex	www.ilogix.com
DAVe			HiTOP is able to take the initialization information for the in-circuit Emulator completely from a DAVe project	DAVe V2.0 or later, HiTOP V4.10 or later	www.infineon.com

Please visit our web sites www.hitex.com or www.hitex.de for more detailed information on the increasing number of Software Development Tools that link into HiTOP.

The company

Since 1976, when Hitex was founded, it has actively created test instruments that enable design engineers to get their jobs done, professionally, error-free, and on-time. The company is divided into 2 divisions.

Development Tools

Working closely with semiconductor manufacturers and strategic customers, Hitex has developed a broad line of in-circuit emulators, which along with high-level language debuggers and other related test

systems have made the name Hitex well known in Europe and in the rest of the world for reliable instruments and excellent technical support. Hitex has sales/support offices in all major world markets.

Automation

The Automation division provides custom solutions for clients. This division contracts to take on any or all phases of a customer project. Let our many years of experience in digital microelectronics work to your advantage.



The company

Hitex Development Tools

www.hitex.com

Embedding Software Quality

Main Office Germany

Greschbachstraße 12 Tel. +49-721-9628-0
D-76229 Karlsruhe Fax +49-721-9628-149
E-mail sales@hitex.de

Hitex USA

710 Lakeway Drive, Tel. 1-800-45-HITEX
Suite 280, Tel. +1-408-7337080
Sunnyvale, CA 94085 Fax +1-408-7336320
E-mail info@hitex.com

Hitex Asia

25, International Tel. +65-566-7919
Business Park, #04-62A Fax +65-563-7539
German Centre E-mail
Singapore 609916 sales@hitexasia.com.sg

Munich Office Germany

Oskar-von-Miller-Str.1a Tel. +49-8165-6175-0
D-85386 Eching Fax +49-8165-6175-449

Hitex UK

Warwick University
Science Park Tel. +44-24-76692066
Sir William Lyons Road Fax +44-24-76692131
GB-Coventry CV47EZ E-mail Sales@hitex.co.uk

This brochure is intended to give overview information only. Since our policy is one of continuing development, changes and technical enhancements are possible. Trademarks of other companies used in the text refer exclusively to the products of these companies. Hitex, HiTOP and RIAS are registered trademarks of Hitex.

Our Partner:



See our web sites for current distributor list!