

Tessy

Automated, dynamic unit test
for embedded applications

CTE

Classification Tree Editor



Embedding Software Quality

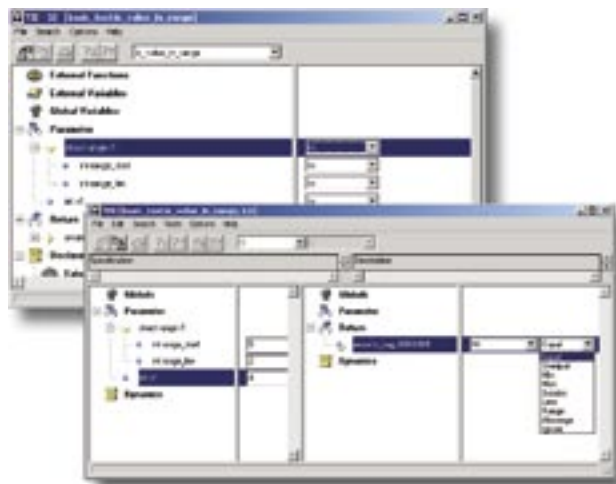
Automated Unit Testing And Debugging At Its Best

Tessy – The Invaluable Test Tool

Tessy performs automatic dynamic unit testing of embedded software and facilitates all other aspects of software testing. It saves an embedded development project tremendous amounts of time, particularly when it comes to regression testing. Regression testing itself is a key feature in achieving software quality.

Unleash It For A Test Run

Tessy starts off by analyzing the source module and then lets the user specify the function to be tested. It then identifies parameters of this function, such as inputs, outputs or both and any external or global variables associated with the function and the subroutines within it. Initial results are displayed in the Test Interface Editor (TIE), where they can be modified should this ever become necessary.



Test Interface Editor and Test Definition Editor (parts of Tessy)



State Your Case

Using the Test Definition Editor (TDE), test cases for functions are then defined by specifying values for input parameters, the expected results and how to compare the actual results with the expected results to determine if a test case has passed or failed. These test cases are saved automatically in a database.

Meet Your Test Driver

Tessy now generates source code for the test driver, which calls the function under test. If this function calls subroutines that are not yet implemented, Tessy is able to create stub functions to replace them. The user may provide source code for a stub function.

Go Tessy Go

Using a suitable compiler, Tessy compiles and links the driver source code, the function under test and any stub functions, and then downloads the resulting executable to the debug system. This might be a Hitex in-circuit emulator in stand-alone mode or one connected to a target system. Testing can also be performed on a host PC. Tessy executes each test case and then determines if it has succeeded or failed. A test report will then be generated in configurable levels of detail and in various formats such as HTML or DOC.

Why Tessy Eases Testing



The test documentation can be generated in HTML format

Testy And HiTOP – Dream Debugging

Using Tessy together with HiTOP, one thing's for sure: if a test case fails, an easy and efficient debugging is guaranteed. Tessy is able to re-execute the test case and have HiTOP set a breakpoint at the function's point of entry. So HiTOP is directed to the beginning of the function under test, with the parameters that caused the wrong result. HiTOP's extremely powerful features and the debug system can now be used to reveal the culprit. Tessy's built-in editor fixes the bug, and the test case can be re-run.

Re-Use Test Data And Save Time

If any interface element of a tested function has been changed in the course of the development process, Tessy allows the user to reassign old interface elements to new ones. Test data from an earlier interface can thus be re-used with the new one, which considerably aids the regression testing process.



Interface Data Assign Editor IDA (part of Tessy)

Regression Testing – Did Your Modifications Cause Errors?

Regression testing reveals if new errors have been introduced during further development of the application, such as bug fixes in other sections, rewriting of the tested function, switching to a new compiler version or porting the software to another microcontroller architecture. Tessy's easy-to-use regression testing ability is an extremely helpful method of checking modified software and thus ensuring software quality.



Batch Testing – Let's You Go Home

Tessy allows the user to run a selected set of test cases without any user intervention. So an extensive regression test can be run overnight and the results can be analyzed the next day.

Easy Management Of Test Data

Tessy is able to export and import test data to and from other tools. This includes CTE test case specifications. Furthermore, Tessy is capable of running a test using input parameters only, with no expected results specified. If the actual results of this test match the predicted ones, Tessy may use them as the expected output values for subsequent test runs. There's no need for the user to explicitly define the expected results.

Software Quality Needs Tessa

Code Coverage – Ensure Everything's Tested

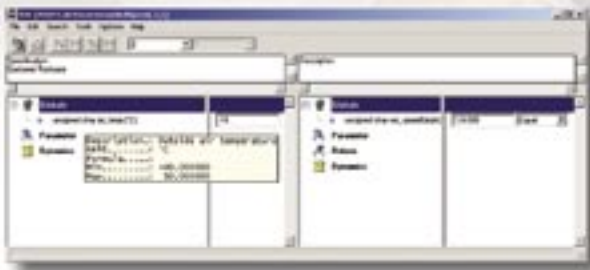
This feature identifies which code branches and subroutines are used and how often. It reveals if any sections of code are left untested and hence if any additional test cases are needed.



HiTOP Source Window with Breakpoint set by Tessa

ASAP2 Files Recognized

Tessa recognizes ASAP2 files, which enables the user to use physical values (e.g. the temperature in degrees Celsius) instead of the integer representation (used by the microcontroller) of that physical value. Additional information from the ASAP2 file (e.g. unit description, minimum and maximum values) may be displayed within the Tessa tools and reports.



ASAP support allows to use physical test values

User's Original Binary Testing

In collaboration with HiTOP, this feature lets the user run tests with the original application in place of the special test application created by Tessa. This significantly simplifies the test process and ensures that the real application is being tested with all its peculiarities and located in its final target configuration. The test cases are specified and run as usual using Tessa's unit testing features.

Supported Compilers/Architectures

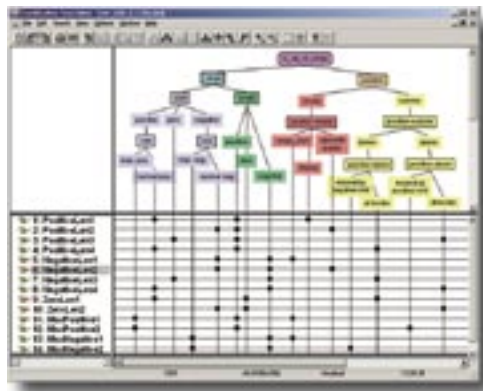
Since Tessa analyzes source code intended for a specific embedded systems compiler and a specific microcontroller architecture, and it also compiles and links the test object using that compiler, Tessa must be adapted to the particular compiler/architecture in question.

Please check our web sites www.hitex.com/perm/tessa.htm or www.hitex.de/perm/tessa.htm for a list of compilers/architectures supported.

Tessa runs on WindowsNT/2000/XP machines.

Both Tessa and the CTE originate from DaimlerChrysler's software technology laboratory in Berlin, Germany.

Design Tests For Confidence



Classification Tree Editor (CTE), a part of Tessy

CTE And The Classification Tree Method

The Classification Tree Method supports a developer confronted with issues such as:

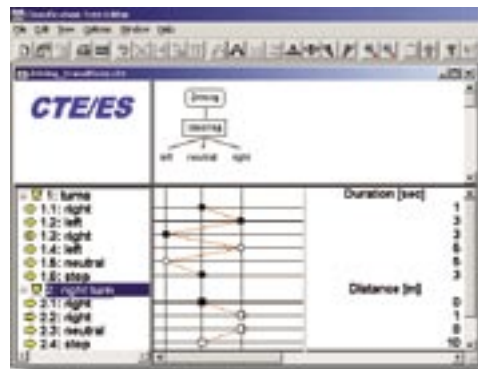
- > Finding the "right" test cases
- > Minimizing a set of test cases while assuring that none are missing
- > Estimating the amount of testing required
- > Defining criteria needed to conclude testing without Risking integrity of the test process

The Classification Tree Method transforms a problem specification systematically into a set of error-sensitive, low-redundancy test cases. This method classifies test relevant aspects, identifies class representatives and leads to test case specifications.

This approach is intuitive and easy to learn. It requires and encourages the developer to employ their creativity. Because thinking about the problem specification is at the very beginning, the Classification Tree Method also reveals inconsistencies or omissions in the problem specification.

The Classification Tree Editor (CTE) is a graphical tool that supports the Classification Tree Method. CTE manages test cases including the test case specification, descriptions, specification comments, etc. The editor is able to export test case specifications in various file formats such as plain text or HTML and others to various programs such as Matlab and Tessy, of course.

Although CTE is a part of Tessy, its use is not only limited to embedded systems and it is therefore available as a separate product.



Test sequences in the CTE

Tessy/CTE

- > Jump start into testing
- > Test data management
- > Automated test execution
- > Seamless integration with HiTOP
- > Powerful regression testing
- > Unlimited number of test cases
- > Test coverage
- > Test documentation



Main Office Germany
Greschbachstraße 12 Tel. +49-721-9628-0
D-76229 Karlsruhe Fax +49-721-9628-149
E-mail sales@hitex.de

Visit us on the internet! www.hitex.com or www.hitex.de

Hitex USA
2062 Business Center Drive, Suite 230
Irvine, CA 92612
Tel. 800-45-HITEX
Tel. +1-949-863-0320
Fax +1-949-863-0331
E-mail info@hitex.com

Hitex UK
Warwick University Science Park
GB-Coventry CV4 7EZ
Tel. +44-24-7669-2066
Fax +44-24-7669-2131
E-mail info@hitex.co.uk

Hitex Asia
25 International Business Park, #04-62A
German Centre
Singapore 609916
Tel. +65-6566-7919
Fax +65-6563-7539
E-mail sales@hitexasia.com.sg

This brochure is intended to give overview information only. Since our policy is one of continuing development, changes and technical enhancements are possible. Trademarks of other companies used in the text refer exclusively to the products of these companies. Hitex, HiSIM, HiTOP, DProbe, JProbe, USB Agent, Tainto and Taintino are trademarks of Hitex Development Tools GmbH. Copyright ©2004.

Embedding Software Quality