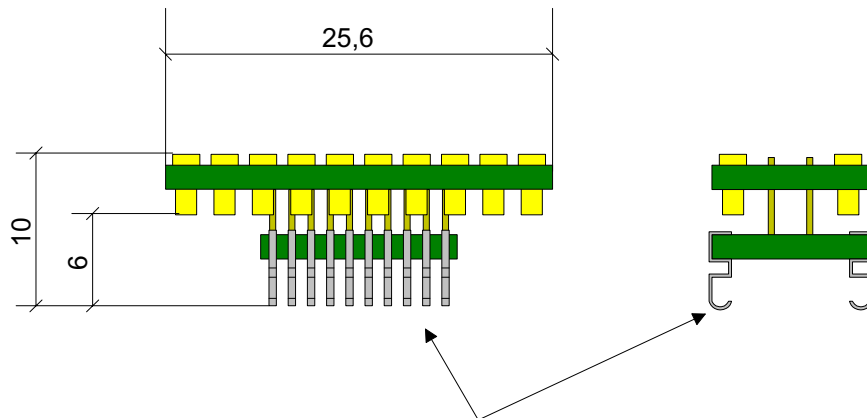


General purpose package conversion adapter DIP-20 / SOP-20 Replacement
Adapter DIP20 SSOP20 Replacement (DW package)
Part No.: ZS-DIP20-SOP20

Top Connection : DIP-20 header of Adaptation cable MX430L

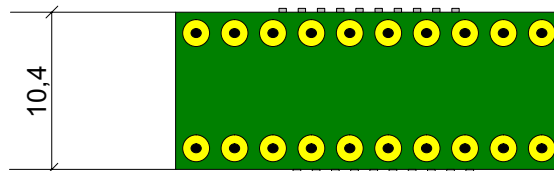
Bottom Connection : SSOP20, SMT footprint (TI's DW package)

Side View:



The adapter is soldered to the SOP-20 SMT-footprint of the target system

Top View:



Note: This adapter has no pin 1 marking, because it is a one to one adapter. The Pin 1 location on the adaptation cable determines the Pin 1 location on the adapter.